

New Data to Shed Light on Access to Dental Care in Oregon

Health Policy Institute
American Dental Association

Objective

The ADA Health Policy Institute prepared two analyses at the request of the Oregon Dental Association:

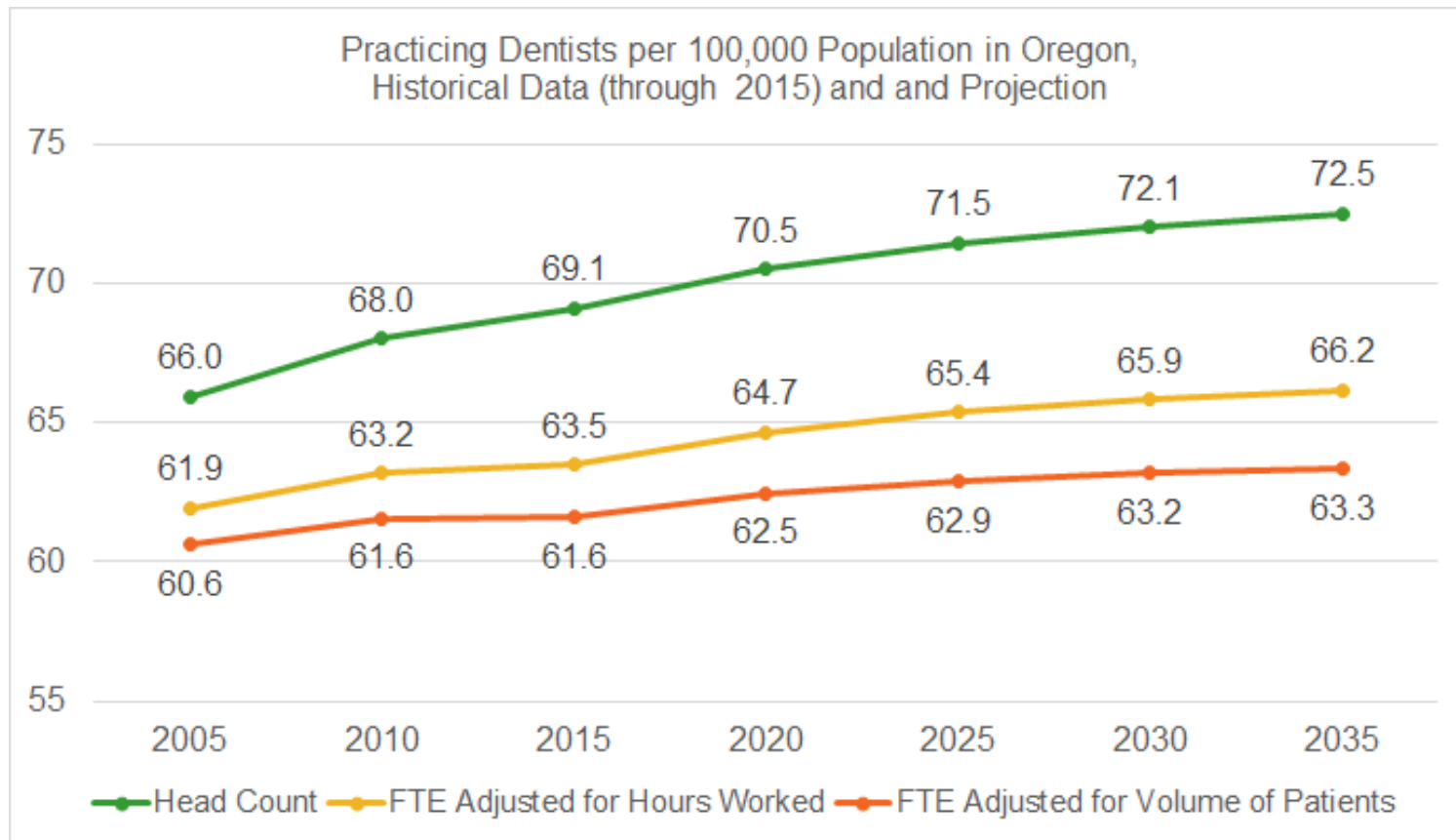
1. Modeling the future supply of dentists in Oregon
2. Geo-analyzing access to Medicaid dental providers in Oregon

Future Supply of Dentists

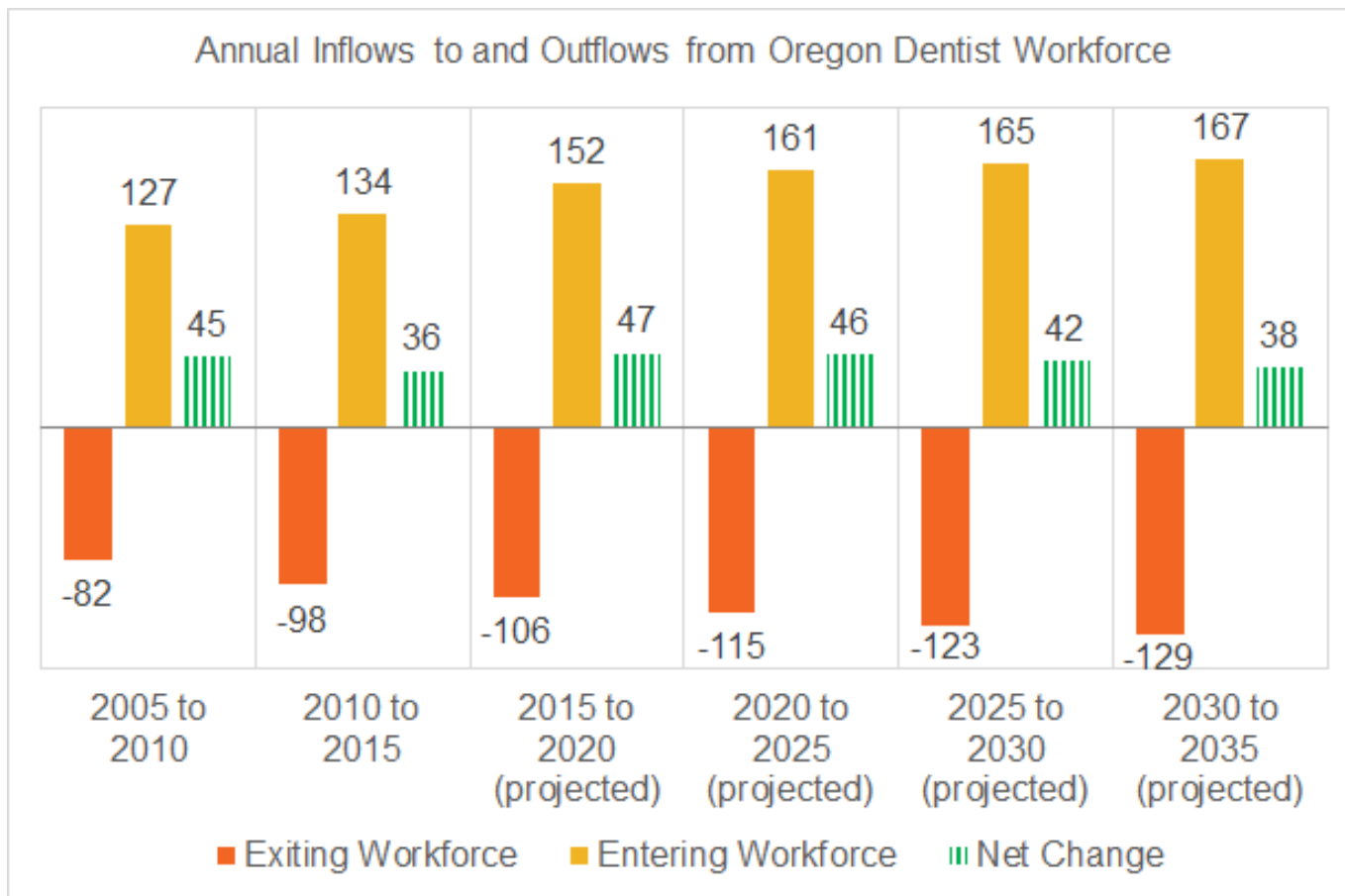
- The analysis modelled inflows to and outflows from the dentist workforce in Oregon.
- The modeling assumptions were guided by empirical data.
- Detailed methodology is available at:

<http://www.ada.org/~media/ADA/Science%20and%20Research/HPI/Files/HPIstateprojections.pdf>

Future Supply of Dentists



Future Supply of Dentists



Future Supply of Dentists

- The supply of practicing dentists in Oregon is projected to rise steadily through 2035.
- Projected inflows to the workforce exceed outflows, and the net increase exceeds projected population growth.
- Taking into account “aging” and “feminization” of the dentist workforce does not change the results.

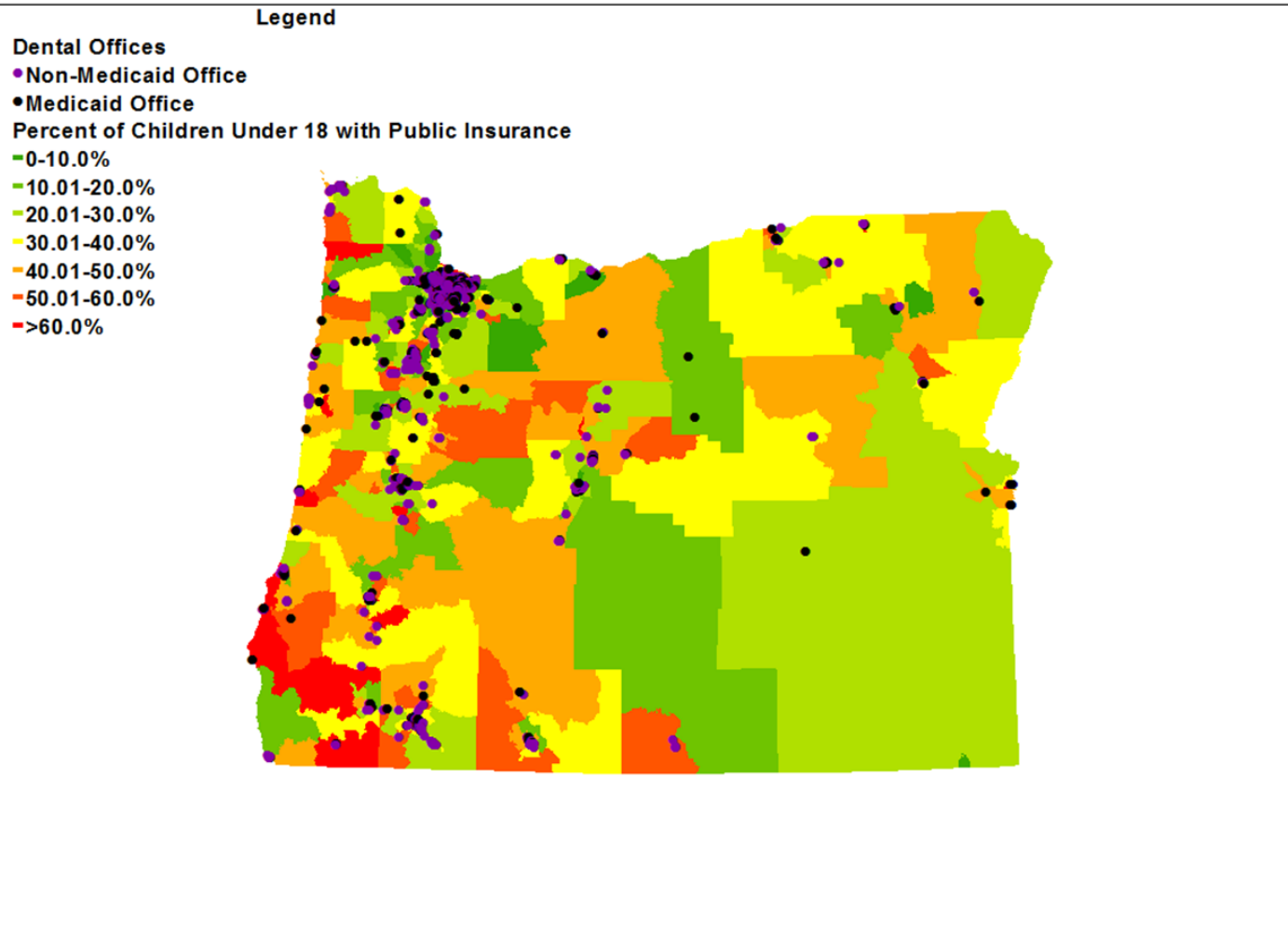
Geographic Access to Medicaid Providers

- The analysis mapped all Medicaid child dental care services providers (sourced from the November 2015 vintage of Insure Kids Now and HPI's Dental Office Database)
- The analysis mapped the Oregon population at the Census block group level, including the number of Medicaid children (sourced from the 2011-2015 5-Year American Community Survey).
- The analysis used sophisticated geo-analytics to measure geographic access of Medicaid children to Medicaid dental care providers.
- Detailed methodology is available at:

<http://www.ada.org/~media/ADA/Science%20and%20Research/HPI/Files/HPIstateprojections.pdf>

Geographic Access to Medicaid Providers

Figure 3. Percentage of Children with Public Insurance. Dental Offices. Oregon

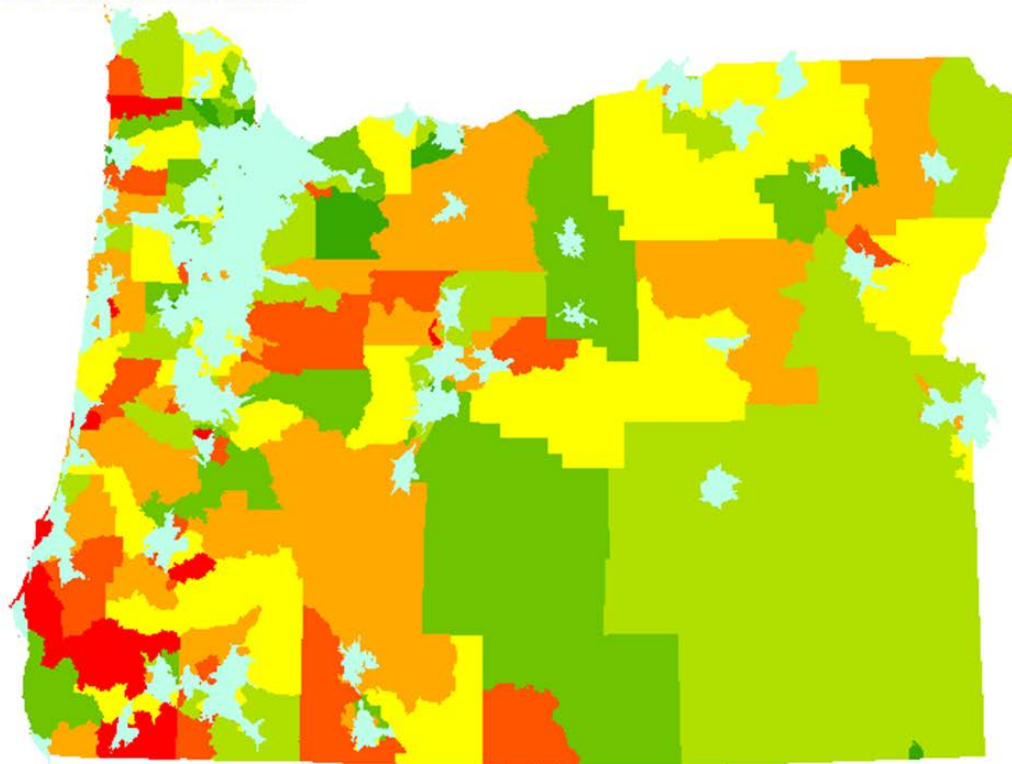


Geographic Access to Medicaid Providers

Figure 1. Percentage of Children with Public Insurance. 15 Minute Drive Time to Medicaid Office. Oregon

Legend
15 Minute Drive Time to Medicaid Office
Percent of Children with Public Insurance

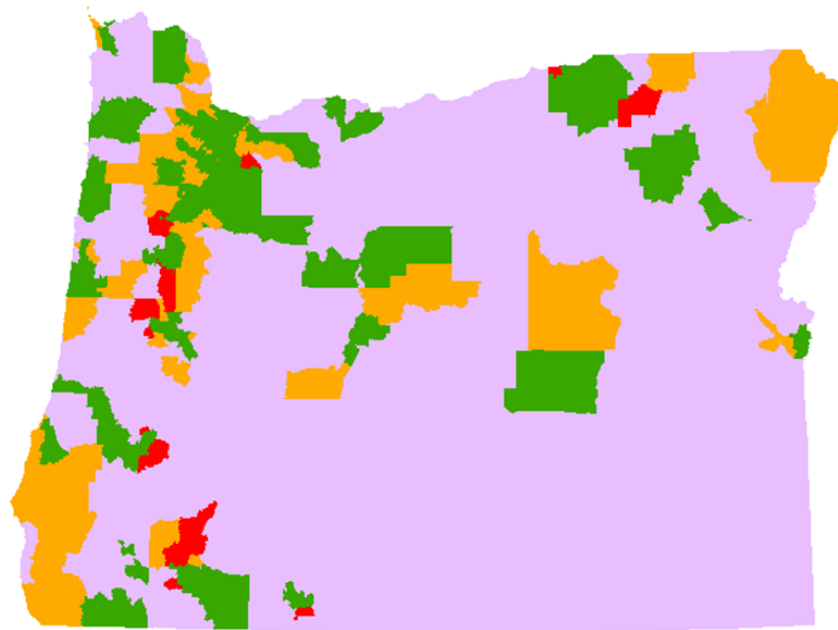
- 0-10.0%
- 10.01-20.0%
- 20.01-30.0%
- 30.01-40.0%
- 40.01-50.0%
- 50.01-60.0%
- >60.0%



Geographic Access to Medicaid Providers

Figure 2. Medicaid Offices 2-Floating Catchment. 15 Minutes. Oregon

Legend
Medicaid Offices 2-Floating Catchment
Outside Catchment
-<500:1
-500:1-2000:1
->2000:1



Geographic Access to Dentists

Figure 4. All Dental Offices. 2-Floating Catchment. 15 Minutes. Oregon

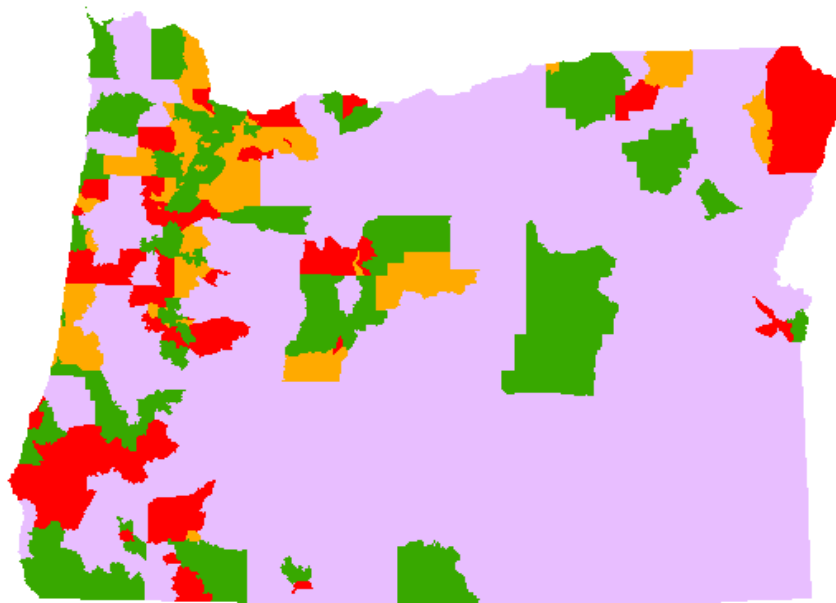
Legend
All Dental Offices 2-Floating Catchment

Outside Catchment

<2500:1

2500:1-5000:1

>5000:1



Geographic Access to Medicaid Providers

- The percent of Medicaid children within a given travel time of a Medicaid dental care provider is:
 - 91% for a 15 minute travel time
 - 98% for a 30 minute travel time
- Of the 91% of Medicaid children within a 15 minute travel time of Medicaid dental care provider, the population to provider ratio breakdown is:
 - Less than 500:1 74%
 - Between 500:1 and 2000:1 15%
 - More than 2000:1 2%
- The percent of the entire Oregon population within a given travel time of any dental care provider is:
 - 94% for a 15 minute travel time
 - 99% for a 30 minute travel time
- Of the 94% of the entire population within a 15 minute travel time of any dental care provider, the population to provider ratio breakdown is:
 - Less than 2500:1 74%
 - Between 2500:1 and 5000:1 14%
 - More than 5000:1 6%